



Novoferm Steel Up & Over Garage Doors



Intelligent Door Solutions



www.novoferm.co.uk

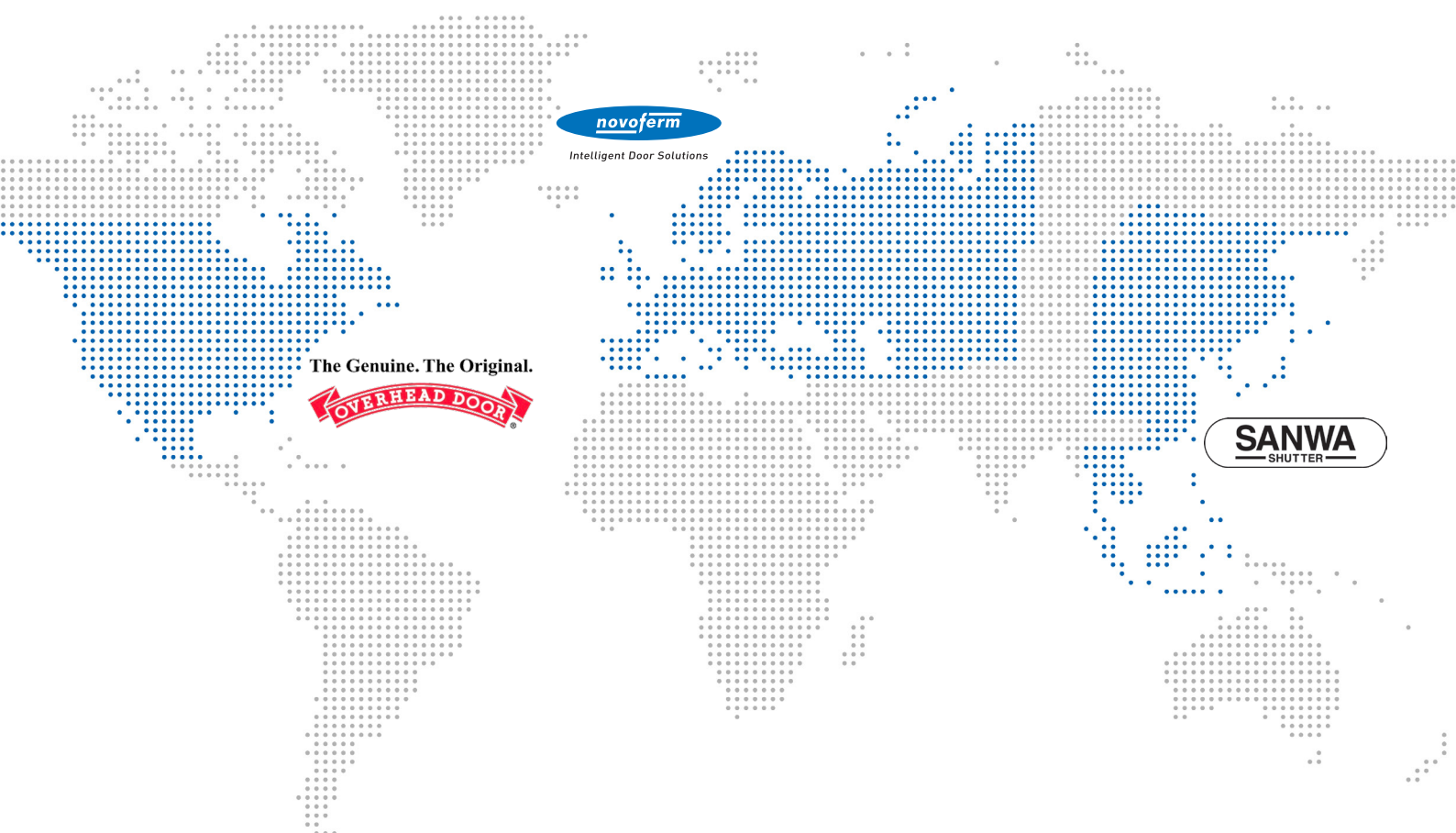
Our Story

Novoform are proud to be a part of the Sanwa Holding Corporation, founded in 1986 and today, considered to be a major global player in the access systems industry.

Sanwa conduct business in 25 countries and regions worldwide with a strong presence in Japan, North America, and Europe.

At Novoform, we are building a team and giving them the support to achieve our ambitions. We will continue building on the improvements and investments that have already begun to improve lead-time reliability and quality for all our clients.

Our vision is to lead through organic business improvement, investment, digital enablement, and tuck-in acquisitions.



Contents

We'll find the right solution for you and see that it is tailored to your exact requirements. Whether you're building a new garage or renovating an existing one, you'll find that our incredible selection of doors are always the right choice.



| | |
|----------------------------|-------|
| Introduction & Benefits | 4-5 |
| Door Styles | 6-8 |
| Novoguard Doors | 10 |
| Colours and Glazing | 11 |
| Automation and Accessories | 12-13 |
| Warranty and Maintenance | 14 |
| Terms and Conditions | 15 |



Intelligent Door Solutions



Steel Up & Over Door Range



Steel Up & Over Doors



SCAN TO SEE MORE DETAILS

Up and over doors are a simple yet effective design that opens by kicking outwards then sliding upwards back along a track that runs along the ceiling. These doors can be both manual or automated for added convenience.

Our steel up and over garage doors are available in a range of designs, colours and finishes.

Our steel up and over doors are specially prepared to ensure the maximum lifespan. The quiet rollers and abrasive strips ensure smooth operation. Multiple spring assemblies ensure sturdiness and ease of use.

Smooth Operation

ALL DOORS available with either canopy or retractable spring assisted gear systems for smooth, safe and reliable operation.

Safe and Secure

HIGH SECURITY twin strong locking bars with the option of a 4 point locking system also available.



Other benefits include:

- ☒ High Distortion Resistance
- ☒ Wide Range of Colours
- ☒ Automatic Operators Available



STEEL UP AND OVER DOORS

Styles

Novoferm Steel Up & Over Garage Doors are the classic choice for your home. They are manufactured from premium grade galvanized steel and finished in white powder coat or powder coat in one of our standard colours. Black euro handle fitted as standard.



Berwick



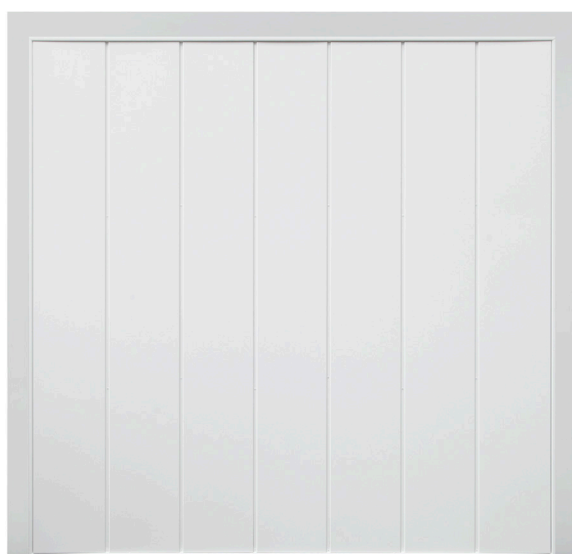
Horizontal



Vertical



Horsham



Victor



Minster



Berkeley Vertical

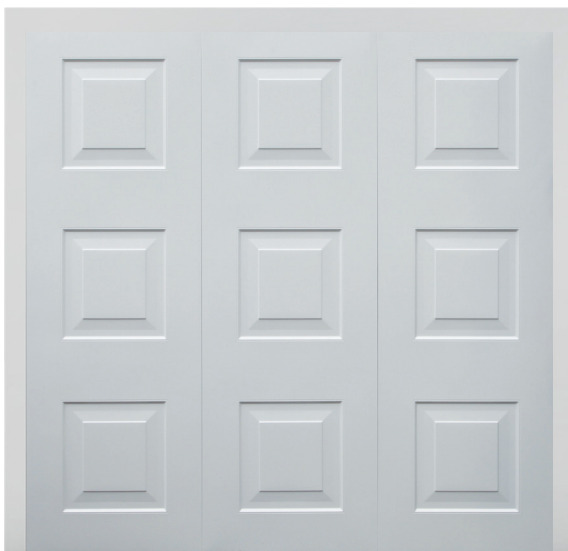


Regency



STEEL UP AND OVER DOORS

Styles



9 Panel Georgian



Wentworth

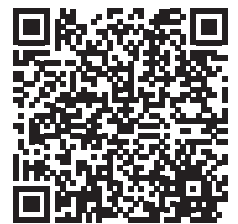


Regency Glazed





Novoguard Doors



SCAN TO SEE MORE DETAILS

Novoguard Secured by Design doors and the 563 Novoguard system package are certificated to CS 5051 STS202 which is approved by ACPO (Association Of Chief Police Officers).

Novoguard doors featuring retractable lifting operation and including a 70mm steel fixing frame are available in any size up to and including 2438mm wide x 2134mm high.

Our Improved Security Doors:



Retractable Steel **Berwick**



Retractable Steel **Vertical**



Retractable Steel **Horizontal**



WARRANTY
COVER



MADE TO
MEASURE



SECURITY
LOCKING



Official Police Security Initiative

STEEL DOORS

Colours & Glazing

Essential Colours



3 of the best selling stunning textured steel finishes

Traffic White
RAL 9016

Jet Black
RAL 9005

Anthracite Grey
RAL 7016



Signature Range

Ral colours available on request

Standard Colours



A choice of 10 stunning textured steel finishes available in our most popular standard colours.

Midnight Blue
RAL 5011

Balmoral Green
RAL 6005

Chartwell Green
BS4800

Monarch Red
RAL 3003

Conker Brown
RAL 8017

Signal Grey
RAL 7004

Agate Grey
RAL 7038

Light Grey
RAL 7035

Window Grey
RAL 7040

Stone Grey
RAL7030

Elite Colours



A choice of 6 stunning colours in a textured steel finish available in a brand new exciting colour range for those who want something a little more special!

Clay Brown
RAL 8003

Oxford Blue
RAL 5013

Cherry Brown
Chroma 3353

Slate Grey
RAL 7015

Fir Green
RAL 6009

Cream
RAL 9001

Premium Finish



Premium grade galvanised steel in woodgrain effect Golden Oak and Rosewood*.

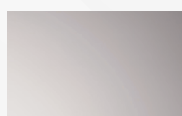
Golden Oak

Rosewood

*Available in some designs only, please check with your installer. All colour samples depicted in this brochure are as close to the original manufacturer's colours as possible. Garage doors supplied may vary in colour from the brochure representation.

Glazing

The following Novoferm side hinged and up and over doors are available with your choice of glazing options



TRANSPARENT



STIPPLED



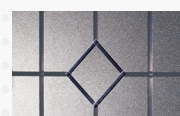
BLACK



DIAMOND LATTICE

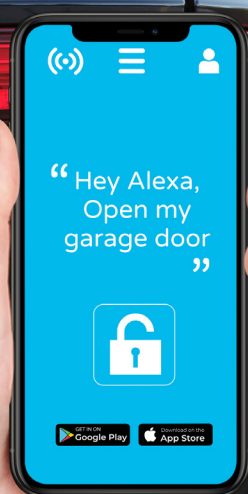


SQUARE LATTICE



QUEEN ANNE LATTICE

Automate your Garage Door



- ✓ Intuitive Adjustment
- ✓ Smartphone-Enabled Door Control
- ✓ Remote Lighting
- ✓ Control More Than One Garage
- ✓ Suitable for Up and Over Doors



Smart Garage App

Novoform garage door operators used with up and over doors can be controlled via the Novoform Mobility APP "SmartGarage". You can download it free of charge from the App Store or Google Play.

All our garage door operators and additional hardware (e.g., light strips) are fitted with energy-saving LED lamps and many of our operators only consume 0.5 W in standby mode. All Novoform operators are manufactured to the highest industry standards and come with a five-year guarantee.

Hand transmitters are protected by AES 128-bit encryption and multi-part rolling codes.

The approved 3-button technology helps with simple and fast adjustment of the operator functions. We also offer a variety of special attractive control pads which are constructed from UV-stable materials.



Novomatic 563 800 N

- Tamper-Proof 2-Channel Rolling Code Hand Transmitter
- Soft-Start and Stop Function
- Self-Monitoring Automatic Shutdown
- Electronically Monitored Push-Up Protection
- LED Lighting
- Connection for Outdoor Lighting up to 500W
- 0.5W in Standby



Novomatic 423 600 N

- Tamper-Resistant Rolling Code Radio System
- Soft-Start and Stop Function
- Automatic Switch-Off When Obstacles Detected
- Burglar-Resistant Design
- Programmable Internal Lighting
- Connection for Outdoor Lighting up to 500W
- Manual Disconnect in Case of Power Loss
- 0.5W in Standby



WARRANTY
COVER

Accessories

You'll need the right accessories to go with the hardware of your choice



SCAN TO SEE MORE DETAILS

Hand transmitters



Mini-Novotron 522 Design
hand transmitter
2-channel, 433 MHz,
KeeLoq rolling code



Mini-Novotron 524 Design
hand transmitter
4-channel, 433 MHz,
KeeLoq rolling code



Mini-Novotron 522 hand
transmitter
2-channel, 433 MHz,
KeeLoq rolling code



Mini-Novotron 524 hand
transmitter
4-channel, 433 MHz,
KeeLoq rolling code

Wireless



Signal 111 remote wall switch
2-channel, 433 MHz, KeeLoq rolling
code for controlling 2 operators or 1
operator and 1 outside lighting
in UV-resistant material

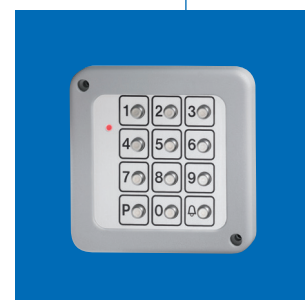


Signal 218 remote coded key pad
10 codes, 433 MHz,
KeeLoq rolling code with stainless
steel cover, backlit
in UV-resistant material

Wired



Signal 112 wall switch
Start key, holiday switch,
continuous light (On/ Off),
24 V connection to the operator
in UV-resistant material



Coded key pad signal 213
3 signals, metal key pad,
230 V connection

Warranty and Maintenance

Our Promise

During the warranty period, we undertake to rectify any defects to the Novoferm product, which can be proven to be attributed to a material or manufacturing defect.

We promise, at our discretion, to either exchange the defective merchandise or repair it.

Replacement parts remain our property.

What is Covered

Subject to the terms and conditions outlined in this document, Novoferm garage doors offer the warranty:

- 10 Years – Safe and reliable operation (for use up to 5 open/close cycles per day)
- 10 years – Structural integrity of door panels
- 10 years – Panel corrosion
- 10 years – retractable, sectional and side hinged doors (2 years on canopy doors) on immovable frame parts
- 5 years – Steel Doors
- 2 years – movable and mechanical parts (including, but not limited to, springs, rollers, wheels, locking points, rods/cables, barrel and locking mechanisms)

Up and Cover Steel Garage Doors

Our steel up and over doors are fully finished with a powder coat paint. Weathering and sun exposure can cause the finish to fade. We guarantee 5 years steel doors finished fully and that any fading will be minimal and uniform, providing the door is maintained in accordance to the care and maintenance advice.

Corrosion

Doors situated in 'high corrosive' areas such as within three miles of the sea, or a large body of saltwater, are not covered for rust or corrosion of steel parts. Cleaning of the doors is especially important in these locations.

Warranty Requirements

This warranty only covers damage to the purchased garage door or garage door operator. A visual standards check will need to be carried out. You will also be required to show a fully completed warranty service passport (service to be conducted by a qualified engineer annually), together with a receipt of purchase, which correspondingly substantiates your right to claim under warranty.

The finish on doors is exempt from the service requirements. In the event of a claim, please contact the company that supplied/installed the doors. They will raise the warranty on your behalf.

During the claims process, a site inspection may be required. For this, we will send an independent assessor. Should this inspection indicate the fault was not caused by a manufacturing defect, you will be liable for the cost of a non-warranty call out. The cost of the call out will be advised prior to the arranged visit.

Novoferm will not accept consequential costs for installation or de-installation, the inspection of parts, transport, and postage costs.

Care and Maintenance

Your door should be kept clean with any stains removed as soon as possible. You should also ensure that the door does not come into contact with any caustic or acidic substance which could damage the door surface or structure.

Your door should be cleaned thoroughly approximately every 2-3 months (in coastal areas or areas close to large bodies of saltwater, this should be done weekly) using warm water and a soft cloth or sponge. Allow the door to dry naturally. Never use detergent, abrasive, caustic, or solvent-based cleaners.

What is not Covered?

- Improper installation, negligent care and maintenance - doors that have not been maintained or had annual maintenance/servicing
- Improper initial and subsequent operation
- Negligent or wanton destruction
- External influences, such as fire, water, salts, alkaline solutions, acids, and any abnormal environmental influences, sunlight
- Mechanical damage, through improper transport and fitting, or through falling or hitting objects
- Repair by non-qualified persons
- Using non-Novoferm parts without the written approval of the manufacturer
- Removal of the product number, or making it unidentifiable
- Application of additional, non-approved weights or infills
- Failure to remove the protective film or packaging provided with the product, where applicable
- Failures caused by extreme or abnormal weather conditions

Visual Standards Check

A visual standards check must be carried out prior to a warranty submission. This check should be carried out in natural daylight, not direct sunlight, standing at a distance of 3m from the door to view the overall appearance. Doors are acceptable if the following are not readily visible on the face of the door:

- Marks or distortion associated with the manufacturing process
- Minor indentations, marks, or scuffs on the surface
- Paint or stain blemishes

Full details on our warranty and maintenance, please visit www.novoferm.co.uk/installation-warranty-and-maintenance-details/

Terms and Conditions

Warranty

In the unlikely event of a warranty claim becoming necessary please contact the dealer or distributor who supplied the door.

To enable your claim to be processed without delay you should provide the following information:

- Your name, address and contact telephone number
- The original invoice and date of purchase
- A description of the door, the door type and the product number
- A description of the reason for the claim

Your dealer will then supply details of your claim, together with a copy of the warranty card supplied with the door and proof of purchase, to the warranty department at Novoferm UK.

An assessment of the claim will be made. This may mean Novoferm will need to come and inspect your door at your premises.

In the event that there is no legitimate claim under the terms of the warranty you will be liable for the costs of this visit. It is essential that you take note of the care and maintenance instructions provided with your door and you follow these instructions throughout the lifetime of your door. It is essential that you take note of the care and maintenance instructions provided with your door and you follow these instructions throughout the lifetime of your door.

The warranty does not cover:

- Improper installation
- Normal wear and tear
- Priming and other surface protection treatments
- Negligent or wanton destruction
- Incorrect or too late applied surface protection treatments
- Repair by a non-qualified installer
- Use of non-Novoferm parts without the approval of Novoferm
- Damage or removal of the product number or making it unidentifiable
- Improper operation
- External influences, such as fire, salts, water, sun, alkaline solutions, abnormal environmental influences
- Mechanical damage caused by improper transport or installation

All dark colours which are exposed to direct sunlight should be avoided. Dark coloured doors may undergo expansion due to heat absorption. Such instances are not covered by the guarantee, however normal performance will revert when the door has cooled down if the heat absorption has affected the door's performance.

All colour samples depicted in this brochure are as close to the original manufacturer's colours as possible. Garage doors supplied may vary in colour from the brochure representation.

Prices

All orders are accepted on the understanding that the goods will be subject to the prices ruling at the time of delivery, unless other terms are specifically agreed. All prices are in £ sterling and exclude VAT.

A 25% handling charge applies to all unwanted items on standard stock items only. Items must be returned unopened and in an unused condition.

All returns are subject to acceptance by Novoferm UK Limited.

Specification

Due to the progressive outlook of the Novoferm Group we reserve the right to alter specifications to design and manufacture without notification. All specifications and details are correct at the time of publication, errors and omissions excepted.

All Doors

Colour match Pairs of doors should be ordered together to obtain the best colour match, bearing in mind the limitations of the materials used in the construction.

Size variations As the size of a door changes in height and/or width, the panel frequency and profile can change, therefore doors of the same style but of different sizes can be significantly different in appearance.

Right to Cancel

Any bespoke product which is made to measure/customised, is exempt of any cancellation rights.



Your Novoferm Stockist



Intelligent Door Solutions



Call Us Now +44 (1582) 563777

Opening times
8.30am - 5.00pm
Monday to Friday

Novoferm UK
Unit 5 - 9 North Luton Industrial Estate
Sedgwick Road
Luton
LU4 9DT
E: customerservice@novoferm.co.uk
www.novoferm.co.uk