

**A brief guide to the Cardale range
of garage doors**

Cardale Garage Doors At A Glance

2014



Cardale - dedicated to manufacturing quality garage doors for over 50 years

Over those 50 years Cardale has brought many innovations and firsts to the garage door industry:

- Cardale introduced the concept of the 'panel door', from which the majority of today's garage door designs are derived
- Cardale was the first to use ABS in producing garage doors which match UPVc and the range remains unique to this day
- Cardale designed the Bedford up and over door, the first to mimic the appearance of traditional side hinged doors
- Timber is at the very heart of Cardale and our reputation is unsurpassed for choice and quality, with levels of craftsmanship found nowhere else



Cardale is a responsible manufacturer and continually strives to reduce its environmental impact footprint through the use of sustainable resources, such as renewable timber. Energy efficient vehicle fleets and consideration of distribution distances for components and raw materials are constantly reviewed for possibilities of improvement.

Automation

Cardale doors are designed for automation, which further increases the safety and security of not only your garage but your entire property. With such convenience at your fingertips you will wonder how you ever got by without this added luxury.



Side hinged

Cardale doors are complete with Euro profile night latch, deadlock, shoot bolts and four anti-drop anchored dog bolt hinges per door leaf, for complete security.

Side hinged doors can be automated for additional security and safety.



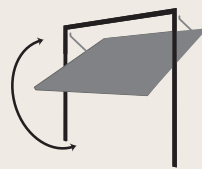
When you choose a Cardale door, you are choosing a British Company with a pedigree of quality and innovation

Our At A Glance brochure is a brief guide to the complete range of Cardale garage doors. Cardale is British owned and we have been manufacturing garage doors for over fifty years. We are sure you'll find exactly the right door for your home amongst Cardale's range - no one offers more choice!

These doors represent the best, not only in looks, but also in terms of safety, security and durability. We at Cardale have no doubt that, in years to come, you will still be as happy with your Cardale door as the day it is installed.

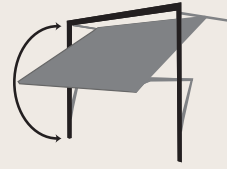
Selecting an opening mechanism

Cardale offer ranges of doors operating in several different ways. Depending on your preference and the physical characteristics of your garage, some types of operation may be more suitable for you than others. The information here will give you an insight into the choice of operating mechanisms and their features.



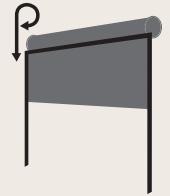
Safelift Trackless Canopy Door Gear

Up and over canopy doors are the most popular style of lifting gear in the UK with a vast range of door styles to suit. Ideally matched to where there is limited headroom for tracks but with the advantage that automation is still available.



Maximizer Retractable Door Gear

An alternative lifting gear for use with up and over doors. Horizontal tracks are attached to the top of the door frame to guide the door open, providing an exceptionally smooth opening and closing action which is ideal for electric operation.



Roller

Roller doors travel vertically, forming a compact coil above the opening, meaning minimum space requirements both inside and out. Slimmed down versions requiring even less headroom are available for both the Thermaglide and Steel-line range.

Selecting the material and finish

Cardale offer a wide selection of popular designs across a range of materials and finishes. This increased choice means you can choose your favourite style, together with the benefits of a low maintenance finish or the luxury of real timber.

Take a look at the options below and check out their unique benefits.



Steel

Constructed using premium grade galvanised steel, Cardale doors are both secure and corrosion resistant, whilst remaining cost effective. A host of finishes is available on selected ranges, including Textured Platisol, Laminated Wood Effect, Powder Coated and Pre-finished. Available on the Up & Over, Sectional, Side Hinged and Steel Roller ranges.



Timber

Every timber door produced is unique - hand crafted using cedar from managed sustainable sources. The huge range of styles to choose from are supplied base coat stained for finishing to a colour of your choice. Alternatively you can choose a hand finished door in one of the six woodtones available in the Up & Over, and Side Hinged ranges.



GRP

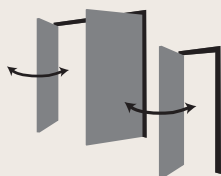
With the same strength to weight ratio as steel this composite material is incredibly robust and is used in the yachting industry due to its durability against the ravaging effects of corrosive weather. Available in low maintenance high gloss white and incredibly lifelike timbergrain effect woodtones, these doors are virtually maintenance free.

Not sure what style? - visit www.cardale.com

Visit our website to see full details of all the door ranges available from Cardale. There is a gallery of pictures showing many styles on a variety of houses, and there's even a spares shop where you can buy Cardale spares and accessories.

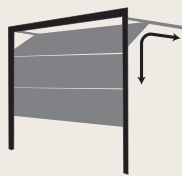
Where to buy - visit www.cardale.com

Cardale doors are available through a network of independent garage door specialists who will be able to provide full details and prices for our range. Visit www.cardale.com or call 0845 026 80 44 for details of your nearest distributor



Side Hinged

Popular 'traditional' operation and ideal if there are obstructions within the garage. Excellent security and very durable construction ensure a long trouble-free service and automation is available as an option.



Sectional

Vertical opening allows 'park-right-up' convenience, whilst the extension or torsion spring operation gives a super smooth mechanism. Enclosed moving parts and push away joints to the panels make for finger safe operation.



ABS

Impact resistant white ABS is the perfect match to complement white PVCu windows and doors and is virtually maintenance free. The material itself is very forgiving against knocks from car bumps and footballs, giving it that 'bounce-back' ability. ABS doors are available in the Up & Over range and side hinged.



Insulated Aluminium Roller Doors

The insulated aluminium lath design is ideal if the garage is used as a workspace or there is a bedroom above it, preventing the heat from escaping and the cold from entering. This door is even capable of withstanding a hurricane! The laths are available with vision slats and in a range of finishes and sizes in the Thermaglide Roller Door range.

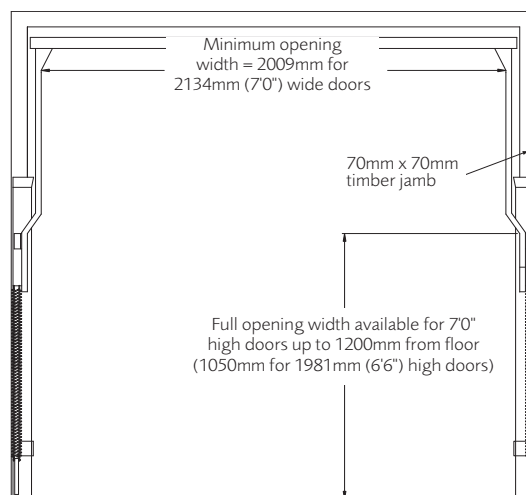
Maximizer - unrivalled drive-through clearance



Garage doors up to 2438mm high (8'0" x 7'6") can be specified with optional Maximizer retractable lifting gear.

Maximizer gear has cranked arms which do not intrude into the lower half of the door aperture when open, allowing clear drive-through access at the wing mirror height of most cars.

Quick-fit steel frames in a variety of finishes are available for single sized Maximizer doors to speed up installation and provide a match with your door finish.



Advanced security features

Cardale canopy doors feature multi-point locking, a handle with a separated non-mastered lock recessed into a steel stiffener, advanced steel bracing across the back of the door to help prevent forced entry and anti-lever devices on the side spindles.



Door handle position

The door handle position will vary according to the lifting gear selected. On canopy gear the handle is in the upper portion of the door, on retractable gear the handle is positioned in the lower portion.



White powder coated pre-finished steel up and over doors

Sheraton II



Sheraton II glazed door also available

Victoria



Olympian



Orion Horizontal



Brompton



Bedford



Vogue



Gatcombe



Georgian



Haven



Chevron



Europa II



Europa I available on request

Gemini



Berkeley Vertical



Orion Vertical



Corrosion resistant garage doors, manufactured in Britain from premium grade galvanised steel and finished in white primer for easy finishing to the colour of your choice.

Black Euro handle fitted on each door unless otherwise specified.

Plastisol doors

Minster



Corinthian



Haven



Gemini



Brompton



Doric



Vogue

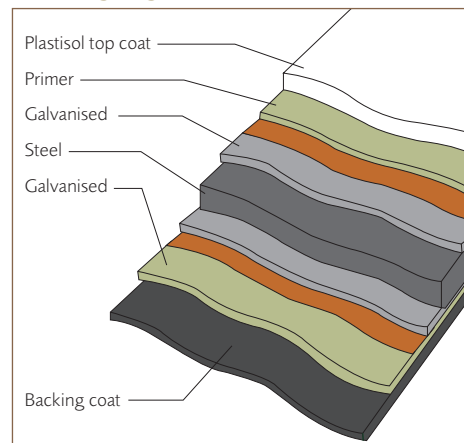


Europa II



Europa I available on request

Cardale garage door cross section



The exterior face of these doors is finished with a high performance, low maintenance Plastisol finish to protect the steel door surface from the elements.

Black Euro handle fitted on each door unless otherwise specified.










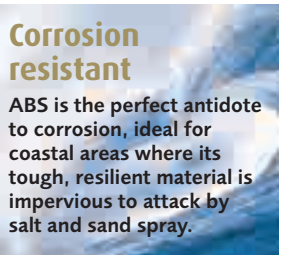
Fully finished coloured steel doors

<p>Sheraton II</p>  <p>Balmoral Green RAL6005</p>	<p>Sheraton II glazed</p>  <p>Midnight Blue RAL5011</p>	<p>Vogue</p>  <p>Cherry</p>	<p>Gatcombe</p>  <p>Conker Brown RAL8017</p>	<p>Gemini</p>  <p>Metallic Grey Special</p>
<p>Georgian</p>  <p>Ebony Black RAL9005</p>	<p>Orion Horizontal</p>  <p>Burgundy</p>	<p>Victoria</p>  <p>Cream</p>	<p>Brompton</p>  <p>Conker Brown RAL8017</p>	<p>Haven</p>  <p>White RAL9016</p>
<p>Olympian</p>  <p>Oxford Blue RAL5013</p>	<p>Europa II</p>  <p>Europa I available on request Grey RAL7042</p>	<p>Bedford</p>  <p>Ebony Black RAL9005</p>	<p>Berkeley Vertical</p>  <p>Monarch Red RAL3003</p>	<p>Orion Vertical</p>  <p>Anthracite RAL7016</p>

Cream	Oxford Blue RAL5013	Ebony Black RAL9005	White RAL9016	Conker Brown RAL8017	Grey RAL7042	Monarch Red RAL3003	Balmoral Green RAL6005	Metallic Grey Special
Midnight Blue RAL5011	Cherry	Anthracite RAL7016	Burgundy					

These doors are factory finished in deep textured paint to one of thirteen classic colours. The deep textured paint finish is incredibly durable and resistant to scuffing and comes with a ten year guarantee.

ABS doors

<p>President</p> 	<p>Vertical & Horizontal</p> 	<p>Vertical & Horizontal</p>  <p>Golden Oak</p>	<p>Vertical & Horizontal</p>  <p>Rosewood</p>	<p>Bedford</p> 
<p>Jacobean</p> 	<p>Regal</p> 	<p>Senator</p> 	<p>Doors designed with "Bounce Back Ability"</p> <p>ABS IT'S TOUGH STUFF!</p> 	<p>Corrosion resistant</p> <p>ABS is the perfect antidote to corrosion, ideal for coastal areas where its tough, resilient material is impervious to attack by salt and sand spray.</p> 

Steel Golden Oak finished doors

Sheraton II



Sheraton II glazed



Olympian



Orion Horizontal



Brompton



Bedford



Vogue



Gatcombe



Georgian



Haven



Jacobean



Europa II



Gemini



Berkeley Vertical



Orion Vertical



Europa I available on request

Steel Rosewood finished doors

Sheraton II



Sheraton II glazed



Olympian



Orion Horizontal



Brompton



Bedford



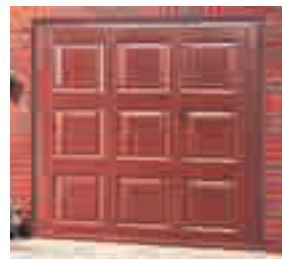
Vogue



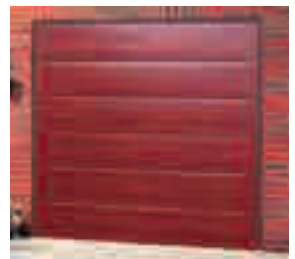
Gatcombe



Georgian



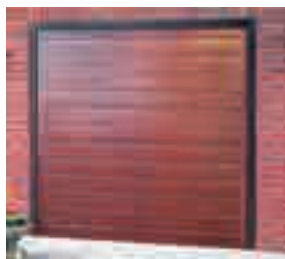
Haven



Jacobean



Europa II



Gemini



Berkeley Vertical

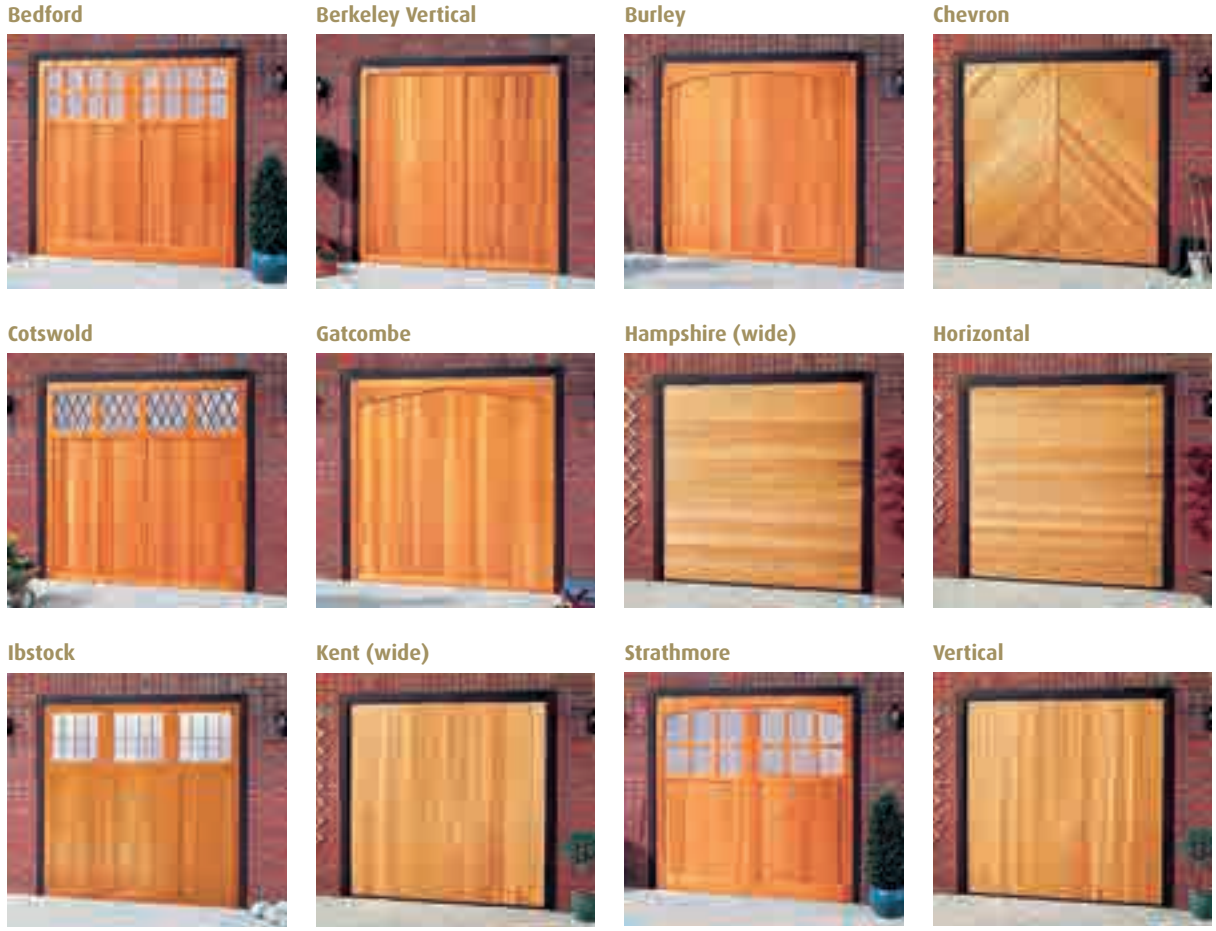


Orion Vertical



Europa I available on request

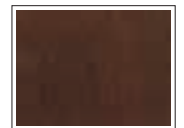
Timber Futura up and over doors



Fully finished options



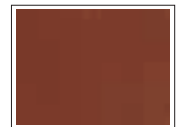
Light Oak



Walnut



Ebony



Mahogany

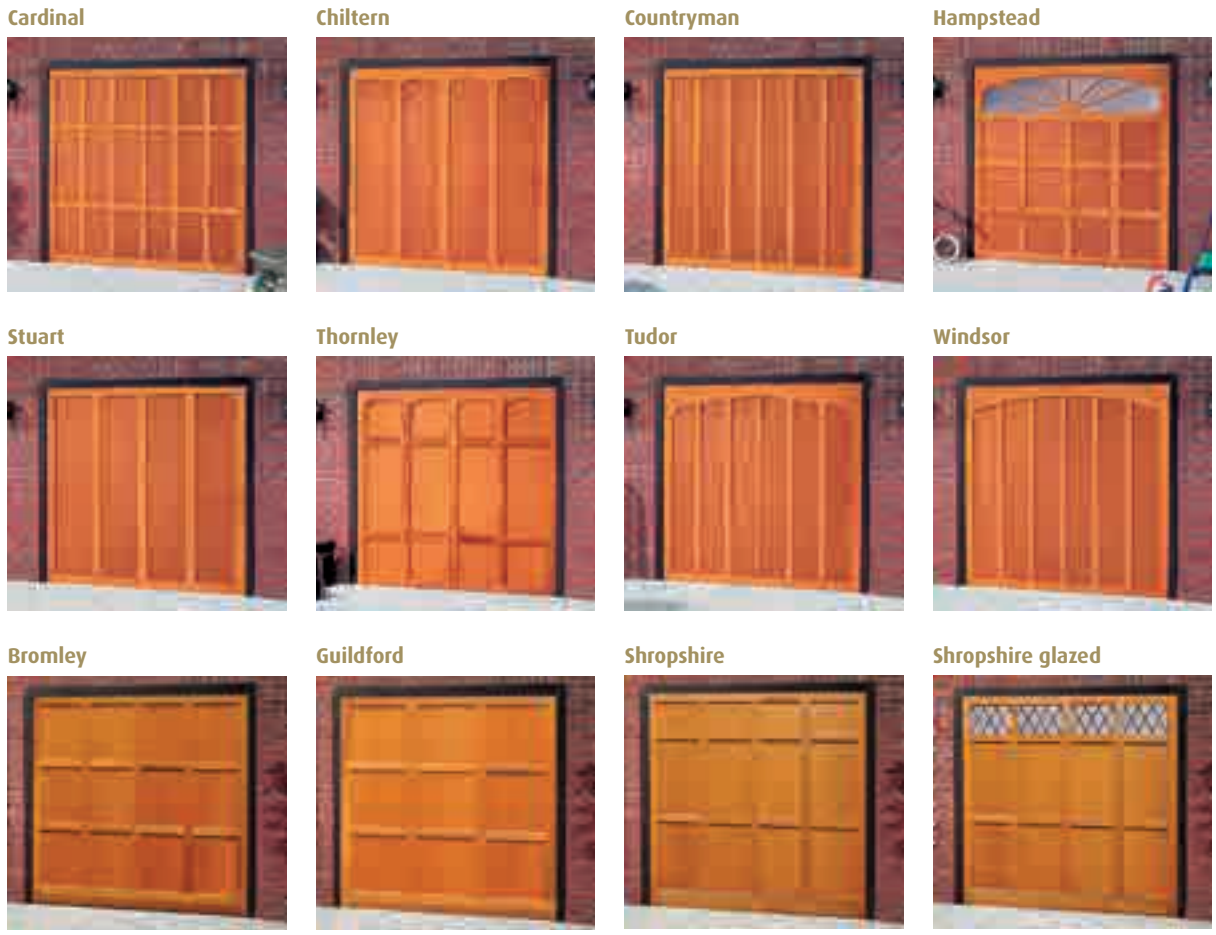


Burnt Oak



Rosewood

Timber Heritage up and over doors



Steel side hinged doors

Sheraton II



NEW

Sheraton II glazed



NEW

Olympian



Bedford



Berkeley Horizontal



Berkeley Vertical



Brompton



Gatcombe



Senator



Jacobean



Gemini



Georgian



Vogue



Berkeley Vertical wicket door



The following Cardale side hinged doors are available with your choice of glazing options: Brompton, Georgian, Senator, Sheraton II.

Europa I available on request

Timber side hinged doors

Bedford (Futura)



Chevron (Futura)



Garage Light (Futura)



Gatcombe (Futura)



Hampshire (Futura)



Ibstock (Futura)



Kent (Futura)



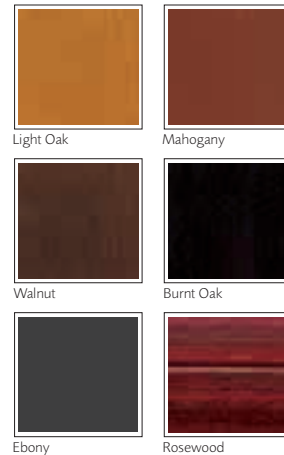
Malvern (Futura)



Milton (Heritage)



Fully finished options



Rutland (Heritage)



Shakespeare (Heritage)



Vertical (Futura)



Berkeley Vertical wicket door



GRP doors

Chelsea II (Glasswhite)



Georgian II (Glasswhite)



Hambledon II (Glasswood)



Lyndhurst II (Glasswood)



A luxury range of low maintenance GRP garage doors exclusively available from Cardale.

With the same strength to weight ratio as steel this composite material is incredibly robust and is used in the yachting industry due to its durability against the ravaging effects of corrosive weather.

Nelson (Glasswood)



Sutherland (Glasswood)



Virginia (Glasswood)



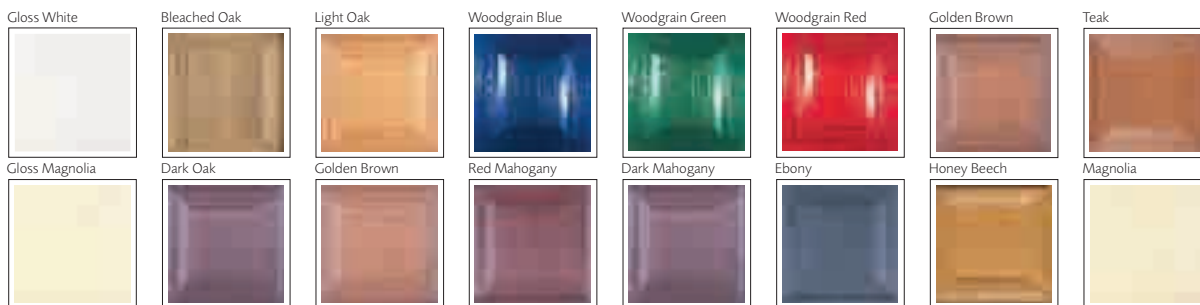
Winchester (Glasswood)



Available in low maintenance high gloss white or magnolia and incredibly lifelike timbergrain effect woodtones, these doors are virtually maintenance free.

All Cardale GRP doors are available in a maintenance free steel frame in a range of standard colours.

RAL colours available as an optional extra.



Single skin Steel-line roller doors



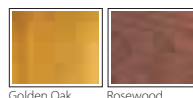
Cardale Steel-line roller doors are a design proven for exceptional durability and long term performance. Simple, clean lines and an excellent colour choice are just part of the appeal of the Steel-line door.



High performance Plastisol finishes



High grade laminate Woodgrain finishes



Personnel doors

Personnel doors are popular as a side entrance to a garage. They are pre-framed and come complete with a Euro profile night latch and deadlock and four anti-drop anchored bolt hinges per door leaf.

Doors open outwards only, with the lock on the right when viewed from the outside. Left hand opening available as an option.

Cardale personnel doors are available in the following finishes to match the door ranges:

Pre-finished, Painted, Plastisol, Golden Oak, Rosewood.

Gemini



Regal



Brompton



Europa II



Insulated sectional steel doors

Horizontal Rib iso20/45



Georgian Panelled iso20/45



Horizontal Golden Oak iso45



Large Rib iso20/45



Flush iso20/45



Large Rib Moss Green iso45



Panelled Glazed iso45



Panelled Glazed smoothfoil iso45



Flush Steel Blue iso45



Sectional doors are very attractive in design - high quality materials, incorporating the latest innovations in manufacturing technology together with a wide choice of options give your garage an individual look.

Door finishes



Textured Woodgrain



Smooth



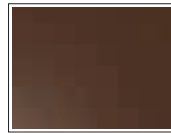
Steel Blue RAL5011



Moss Green RAL6005



Ochre Brown RAL8001



Nut Brown RAL8011



Window Grey RAL7040

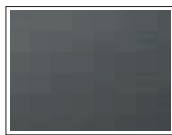


Fir Green RAL6009

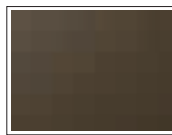
Insulated sectional doors are finished in Woodgrain White as standard. Panelled white doors are supplied in Woodgrain finish only. Woodgrain and smooth doors are available in a range of ten 'Super Colours', or in your choice of RAL colour.

Smoothfoil door finishes

Three smoothfoil finishes with a weather resistant foil coating are available on the iso45 range of sectional doors.



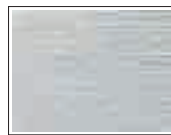
Anthracite Grey RAL7016



Sepia Brown RAL8014



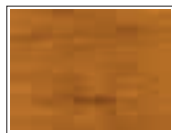
Black RAL9011



Light Grey RAL7035



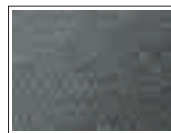
Rosewood



Golden Oak



Dark Oak



Satin Grey

Satin Grey is available on the Large Rib and Flush iso45 range of doors.

Aluminium insulated roller doors

Thermaglide77



Thermaglide77 roller doors

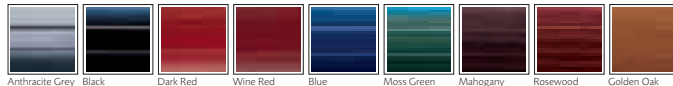
Thermaglide takes the concept of the roller garage door to a new level. It out-performs the ordinary garage door for ease of use, insulation, finishes, safety and security and all doors are manufactured under strict and controlled guidelines.

Thermaglide77 colours

Low maintenance powdercoat finishes



Low maintenance high grade woodgrain laminate finishes



Thermaglide55

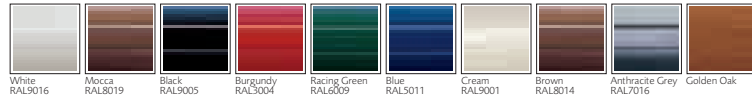


Thermaglide55 roller doors

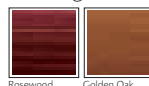
Where headroom is especially tight, the Thermaglide 55 has all the features of Thermaglide 77 but requires only 205mm of headroom and is now available up to 2.8 metres wide and 2.4 metres high.

Thermaglide55 colours

Low maintenance powdercoat finishes



Weathergrain wood laminate finishes



Notes on colour

Door guides and boxes are available in colours matching the door curtain, except laminate door colours, (supplied in brown). Coloured guide rails are supplied as standard, however, they may not match the lath colour. The manufacturing process for the lath profile results in a textured finish, whilst all other coloured items (guides, bottom laths, lock laths, optional fascias and vision panels) are supplied in a satin finish, so cannot be guaranteed to match exactly. Over time some suffing may occur on front and rear surfaces of doors as a result of their normal operation. Accuracy of colours shown is limited by printing process.

Accessories and optional extras

Up and Over door operators



Cardale DC650T

Traction force 650N for doors up to 4300 wide x 2134 high (<90kg)

Cardale DC800T

Traction force 800N, for doors up to 5000 x 2438 high (>90kg)

Cardale garage door operators are equipped with reliable proven technology you can rely on.

- The automatic obstruction detection ensures optimum protection, particularly useful for families with children
- The self-locking motor ensures effective protection against break-ins
- No additional locking mechanism is necessary for the Cardale garage door operators
- The Cardale emergency release system means the door can be opened (unlocked) and locked manually in any position. Your garage door is locked (closed) during a power failure as well providing optimal safety
- 2 speed travel - the start and end of the motor movement are softened to give a quiet opening and closing cycle, (avoiding noisy door slam)
- Cardale operators are compatible with a wide range of accessories, including light barriers and external keypads and integrate with Cardale home automation products

Sectional door operators



Unique technology with flexible side mounting for Cardale Sectional garage doors

The Sectional Door operator system not only offers maximum convenience during operation, but also during installation.

After all, it is not fixed to the ceiling like conventional operators, but simply integrated into the side garage door track - either on the left or the right depending on the structural conditions.

Therefore no ceiling assembly is required and any installation problems are ruled out from the outset.

All structural components are pre-assembled in the factory and dimensionally accurate - simply insert them together and voilà!

The wear resistant, maintenance-free toothed belt lies well-protected in the garage door track, guaranteeing maximum operational reliability, long service life and quiet smooth-running.

Glazing



Plain Black



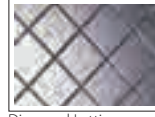
Transparent



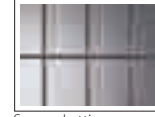
Translucent (stippled)



Queen Anne Lattice



Diamond Lattice



Square Lattice

Bedford doors only available with Black or Stippled glazing

Selected Cardale garage door designs are available with glazing, with a range of attractive designs to blend with your house windows and doors. If the door does not have glazing in its standard design, the window panels will be fitted to the top design detail. Window surrounds on the Bedford doors are available in white or black only.

Glazing for Cardale up & over and side hinged doors is available in plain black, translucent or transparent finishes and in a range of lattice and feature styles.

The feature designs are hand laid using coloured films and antiqued lead.

Transparent or clear windows are see-through and allow light into the garage. Translucent windows have a stippled effect which allows light into the garage but are not see-through. Plain black windows are decorative only and don't allow any light into the garage.

Glazed windows are constructed from shatter resistant polycarbonate with a stippled, translucent anti-reflectant finish.

Frames

Up and over doors are available with the option of a frame and it is a recommended choice for a high quality installation. Single doors (up to 2438mm/8'0" wide) are supplied pre-framed and double doors (over 2438mm/8'0" wide) are supplied with the frame as a knock down kit for assembly when the door is installed.

Side hinged and personnel doors are supplied framed as standard. Frames are available in the same finish options as shown for steel up & over doors. Roller garage doors have integral guide channels.

2 Command Transmitter

- Up to two applications possible
- Modern, compact design
- LED built-in light

Each Cardale operator is supplied with two transmitters



Handles



A brass effect finger pull is supplied with Cardale side hinged doors and personnel doors.

Cardale ABS, GRP and timber up & over doors are supplied with a black handle as standard, a brass effect handle is available at an additional charge.

Draughtstrip



A bottom edge brushstrip is available as an option to fit all Cardale up & over doors.

Ideal for uneven floor surfaces, the brushstrip will help prevent leaves, dirt and draughts blowing into your garage.

Cardale guarantees

Guarantees are subject to the conditions as set out below;

1. During the comprehensive 2 year guarantee period Cardale Doors undertake to repair or replace (at its discretion), and without charge, products or components which have suffered any form of manufacturing defect. Claims must be notified within 3 days from the date of delivery or within a reasonable time after discovery of any defect.
2. Products covered by these guarantees must have been purchased through an authorised Cardale garage door distributor or as original equipment attached to a newly built dwelling.
3. The warranties shall apply for normal use only. Normal use constitutes no more than 5 operations (open/close cycles) per day.
4. The warranties offered attach to the Cardale product only and no consequential damages will apply no matter how caused.
5. No liability will be accepted as a result of normal wear and tear, incorrect storage, incorrect handling, faulty installation, incorrect use or wilful damage.
6. Claims under this guarantee must be made through the original supplier and accompanied by relevant documentation indicating the date of purchase (e.g. receipt).
7. Cardale Doors' maximum liability shall be the original purchase price inclusive of Value Added Tax at the rate prevailing when supplied.
8. Any product which is the subject of a claim:
 - i) must have been correctly installed in accordance with the installation instructions supplied and thereafter properly maintained by a suitably experienced engineer on a regular basis as set out in the Maintenance and Operating Instructions provided with every door. (Additional copies of these instructions are available by calling 0871 231 7570. We recommend that regular maintenance is provided by a suitably experienced engineer. Contact us on www.cardale.com to find your local Cardale garage door specialist.
 - ii) must have the manufacturer's reference number still intact (found on the barcode label on the door).
 - iii) must not have been modified in any way.
9. Claims will not be accepted where the cause is due to:
 - i) impact or mechanical damage suffered during or following installation, e.g scratches, indentations, tears, scuffs or other surface abrasion.
 - ii) damage or discolouration caused by contact with any form of caustic, abrasive or corrosive substance, fumes, bird droppings, fire, smoke, floodwater, salts, acids, or from exposure to abnormal atmospheric pollution.
10. This guarantee excludes normal wear and tear on items such as cones, cables, spindles, lock cylinders, hinges or springs.
11. Only Cardale original spare parts must be used when required. The use of non-Cardale parts shall invalidate this guarantee. Warranty period for replacement parts is 6 months or the balance of the original warranty period if greater.
12. The Exterior Finish Guarantee applies only to the weatherside surface and where more than 5% of the surface area of the door is affected. Surfaces must be freely exposed to washing by rainfall and kept clear of accumulated dirt and debris and given equal exposure to local environmental conditions and consistent natural lighting conditions across the face of the door. Special attention is drawn to Clause (9) (ii).
13. Primed steel doors and basecoat treated timber doors must receive a suitable exterior quality finishing topcoat immediately after installation. This topcoat finish must be applied strictly in accordance with the manufacturer's instructions.
14. Cardale timber doors are guaranteed against any form of manufacturing defect or mechanical failure for a period of 2 years from the date of original purchase. The exterior factory fully finished panel is guaranteed to provide a weatherproof membrane which will resist perforation of the substrate from the weather side due to corrosion for a period of up to 5 years, dependent on location and position of the door and provided the door has been maintained in accordance with the manufacturer's instructions.
15. The guarantee period for electric operators excludes batteries, fuses and light bulbs.
16. Parts replaced free of charge become the property of Cardale Doors.
17. Attempted repairs by non-qualified individuals shall invalidate this guarantee.
18. Cardale garage doors and associated products are sold subject to the Cardale Doors Standard Terms and Conditions of Sale, copies of which are available upon request. Cardale Doors shall not be liable as a result of any representation, implied warranty or other term or condition or for any consequential loss or damage, costs, expenses or other claims whatsoever except as expressly set out in these Terms and Conditions of Sale.
19. All colour samples depicted in this brochure are as close to the original manufacturer's colour as possible. Garage doors supplied may vary in colour from the brochure representation.



For more information or to request a brochure on any of Cardale's ranges of Garage Doors and accessories, contact:

Cardale Garage Doors
North Luton Industrial Estate, 5-9 Sedgwick Road, Luton, LU4 9DT
Tel: 0845 026 80 44, Fax: 0845 026 80 47
www.cardale.com



Presented by:

Cardale reserves the right to alter specifications to design and manufacture without notification. All specifications are correct at time of publication, errors and omissions excepted.